

HILLSHIRE FARM
HILLSHIRE BRANDS RETAIL FROZEN
(/PRODUCTDETAIL/SUPPLIERSITEREDIRECT?
URL=HTTP%3A%2F%2FWWW.HILLSHIREBRANDS.COM%2F)
DOT 712490
MFG 10000097592
GTIN 10044500975922

Black Forest Ham & Swiss Hearty Wedge

6-.516 POUND

3.94 lbs, 0.45 cube, 15 per layer, 105 per pallet

[HELP US IMPROVE PRODUCT INFORMATION? \(/SURVEY/PRODUCTDETAIL?ITEMNUMBER=712490\)](#)

	UOM	ORDER SIZE	THE PRICE	AVAILABILITY
	CASE	5,000 #+	\$16.6600	Stocked
		10,000 #+	\$16.6600	
		20,000 #+	\$16.6600	
		40,000 #+	\$16.6600	

AT A GLANCE

NUTRITION INFORMATION

GTIN

Black Forest Ham & Swiss Hearty Wedge

Dot #: 712490
Mfr #: 10000097592
GTIN: 10044500975922
Supplier: Tyson Foods, Inc.
Description: Black Forest Ham & Swiss Hearty Wedge

Product Information

Classification:	Sandwiches/Filled Rolls/Wraps (Frozen) (10000254)
Dimensions (HxWxD):	6.12 x 9.44 x 13.31 Inch
Weight Gross / Net:	3.94 Pound / 3.09 Pound
Origin:	(US) UNITED STATES
Storage Temperature:	0° to 0°
Pallet Configuration:	Ti:15 Hi:7
Servings Per Container:	1

Features and Benefits (Case GTIN: 10044500975922)

Features:	Marketing Message Coming Soon
Preparation and Cooking:	Unspecified - Not applicable.
Storage:	Frozen

Features and Benefits (Consumer or Base GTIN: 00044500975925)

Features:	Marketing Message Coming Soon
Preparation and Cooking:	Unspecified - Not applicable.
Storage:	Frozen

Nutritionals and Ingredients (Case GTIN: 10044500975922)

Representation of label(s). The actual nutritional label(s) on the package may vary slightly

Nutrition Facts (Unprepared)	
1 Servings Per Container	
Serving Size	231 g
Amount Per Serving	
Calories	510

	% Daily Value*
Saturated Fat 7 g	35%
Trans Fat 0 g	
Cholesterol 50 mg	17%
Sodium 1630 mg	71%
Total Carbohydrate 66 g	24%
Dietary Fiber 5 g	18%
Sugar 13 g	0%
Added Sugar 3 g	6%
Protein 29 g	
Vitamin D 0.3 µg	2%
Potassium 410 mg	8%
Calcium 390 mg	30%
Iron 3.8 mg	20%
Vitamin A	0%
Vitamin C 0 mg	0%
* The % Daily Value (DV) tells you how much a nutrient in a serving of food contributes to a daily diet. 2,000 calories a day is used for general nutrition advice.	

Ingredients: WHEAT BREAD: Enriched Wheat Flour (Wheat Flour, Malted Barley Flour, Niacin, Reduced Iron, Thiamine Mononitrate, Riboflavin, Folic Acid), Water, Dough Base (Dextrose, Sugar, Soybean Oil, Salt, Mono-And Diglycerides, Defatted Soy Flour, Corn Starch, Contains 2% or Less of: Monocalcium Phosphate, Calcium Stearoyl Lactylate [CSL], Ascorbic Acid [Vitamin C], Potassium Iodate, Soy Lecithin, L-Cysteine Hydrochloride, Natural And Artificial Flavor, Enzymes [Wheat]), Cracked Wheat Flour, Honey, Yeast, Calcium Propionate, Dough Conditioner (Calcium Sulfate, Wheat Starch, Wheat Flour, Contains 2% Or Less Of: Enzymes [Wheat], Salt), Salt, Caramel Color, Dough Conditioner (Wheat Flour, Diacetyl Tartaric Acid Esters Of Mono-Diglycerides [DATEM], Contains 2% or Less of: Soybean Oil, Enzymes [Wheat], Ascorbic Acid [Vitamin C], L-Cysteine Hydrochloride). BLACK FOREST HAM-WATER ADDED (CARMEL COLORED CASING): Ham, Water, Honey, Salt, Less Than 2% Modified Food Starch, Dextrose, Vinegar, Sodium Phosphates, Sodium Nitrite, And Sodium Erythorbate. SWISS CHEESE: Part-Skim Milk, Cheese Culture, Salt, Enzymes.

Nutritionals and Ingredients (Consumer or Base GTIN: 00044500975925)

Representation of label(s). The actual nutritional label(s) on the package may vary slightly

Nutrition Facts (Unprepared)	
1 Servings Per Container	
Serving Size	231 g
Amount Per Serving	
Calories	510
	% Daily Value*
Saturated Fat 7 g	35%
Trans Fat 0 g	
Cholesterol 50 mg	17%
Sodium 1630 mg	71%
Total Carbohydrate 66 g	24%
Dietary Fiber 5 g	18%
Sugar 13 g	0%
Added Sugar 3 g	6%
Protein 29 g	
Vitamin D 0.3 µg	2%
Potassium 410 mg	8%
Calcium 390 mg	30%
Iron 3.8 mg	20%
Vitamin A	0%
Vitamin C 0 mg	0%
* The % Daily Value (DV) tells you how much a nutrient in a serving of food contributes to a daily diet. 2,000 calories a day is used for general nutrition advice.	

Ingredients: WHEAT BREAD: Enriched Wheat Flour (Wheat Flour, Malted Barley Flour, Niacin, Reduced Iron, Thiamine Mononitrate, Riboflavin, Folic Acid), Water, Dough Base (Dextrose, Sugar, Soybean Oil, Salt, Mono-And Diglycerides, Defatted Soy Flour, Corn Starch, Contains 2% or Less of: Monocalcium Phosphate, Calcium Stearoyl Lactylate [CSL], Ascorbic Acid [Vitamin C], Potassium Iodate, Soy Lecithin, L-Cysteine Hydrochloride, Natural And Artificial Flavor, Enzymes [Wheat]), Cracked Wheat Flour, Honey, Yeast, Calcium Propionate, Dough Conditioner (Calcium Sulfate, Wheat Starch, Wheat Flour, Contains 2% Or Less Of: Enzymes [Wheat], Salt), Salt, Caramel Color, Dough Conditioner (Wheat Flour, Diacetyl Tartaric Acid Esters Of Mono-Diglycerides [DATEM], Contains 2% or Less of: Soybean Oil, Enzymes [Wheat], Ascorbic Acid [Vitamin C], L-Cysteine Hydrochloride). BLACK FOREST HAM-WATER ADDED (CARMEL COLORED CASING): Ham, Water, Honey, Salt, Less Than 2% Modified Food Starch, Dextrose, Vinegar, Sodium Phosphates, Sodium Nitrite, And Sodium Erythorbate. SWISS CHEESE: Part-Skim Milk, Cheese Culture, Salt, Enzymes.

Allergens and Diet (Case GTIN: 10044500975922)

Allergen Values (FDA)

Shop By Select Customer

(/Modal/ChooseCustomer)
search



Search By: Multiple Item Numbers (/Search/ByNumbers).

 Hello, M

(/Home/Index).

HILLSHIRE FARM
HILLSHIRE BRANDS RETAIL FROZEN
 (/PRODUCTDETAIL/SUPPLISITEREDIRECT?
 URL=HTTP%3A%2F%2FWWW.HILLSHIREBRANDS.COM%2F)

DOT 712491
MFG 10000097593
GTIN 10044500975939

CASE:

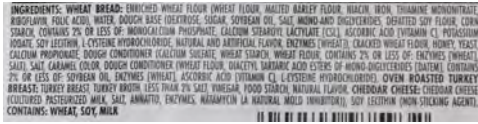
ADD TO

ADD TO FAVOI

SHARE VIA EM

PRINT (/MOD)

DOWNLOAD (/



Hearty Turkey & Cheddar Wedge

6-.516 POUND

3.94 lbs, 0.45 cube, 15 per layer, 105 per pallet

[HELP US IMPROVE PRODUCT INFORMATION? \(/SURVEY/PRODUCTDETAIL?ITEMNUMBER=712491\)](/SURVEY/PRODUCTDETAIL?ITEMNUMBER=712491)

UOM	ORDER SIZE	THE PRICE	AVAILABILITY
CASE	5,000 #+	\$16.6600	Stocked
	10,000 #+	\$16.6600	
	20,000 #+	\$16.6600	
	40,000 #+	\$16.6600	

AT A GLANCE

NUTRITION INFORMATION

GTIN



Hearty Turkey & Cheddar Wedge

Dot #: 712491
Mfr #: 10000097593
GTIN: 10044500975939
Supplier: Tyson Foods, Inc.
Description: Hearty Turkey & Cheddar Wedge

Product Information

Classification:	Sandwiches/Filled Rolls/Wraps (Frozen) (10000254)
Dimensions (HxWxD):	6.12 x 9.44 x 13.31 Inch
Weight Gross / Net:	3.94 Pound / 3.09 Pound
Origin:	(US) UNITED STATES
Storage Temperature:	0° to 0°
Pallet Configuration:	Ti:15 Hi:7
Servings Per Container:	1

Features and Benefits (Case GTIN: 10044500975939)

Features:	Marketing Message Coming Soon
Preparation and Cooking:	Unspecified - NoneNone
Storage:	Frozen

Features and Benefits (Consumer or Base GTIN: 00044500975932)

Features:	Marketing Message Coming Soon
Preparation and Cooking:	Unspecified - NoneNone
Storage:	Frozen

Nutritionals and Ingredients (Case GTIN: 10044500975939)

Representation of label(s). The actual nutritional label(s) on the package may vary slightly

Nutrition Facts (Unprepared)	
1 Servings Per Container	
Serving Size	231 g
Amount Per Serving	
Calories	500
% Daily Value*	
Saturated Fat 6 g	30%

Trans Fat 0 g	
Cholesterol 50 mg	17%
Sodium 1190 mg	52%
Total Carbohydrate 62 g	23%
Dietary Fiber 5 g	18%
Sugar 10 g	0%
Added Sugar 2 g	4%
Protein 33 g	
Vitamin D 0.1 µg	0%
Potassium 220 mg	4%
Calcium 350 mg	25%
Iron 4 mg	20%
Vitamin A	0%
Vitamin C 0 mg	0%
* The % Daily Value (DV) tells you how much a nutrient in a serving of food contributes to a daily diet. 2,000 calories a day is used for general nutrition advice.	

Ingredients: WHEAT BREAD: Enriched Wheat Flour (Wheat Flour, Malted Barley Flour, Niacin, Reduced Iron, Thiamine Mononitrate, Riboflavin, Folic Acid), Water, Dough Base (Dextrose, Sugar, Soybean Oil, Salt, Mono-And Diglycerides, Defatted Soy Flour, Corn Starch, Contains 2% or Less of: Monocalcium Phosphate, Calcium Stearoyl Lactylate [CSL], Ascorbic Acid [Vitamin C], Potassium Iodate, Soy Lecithin, L-Cysteine Hydrochloride, Natural And Artificial Flavor, Enzymes [Wheat]), Cracked Wheat Flour, Honey, Yeast, Calcium Propionate, Dough Conditioner (Calcium Sulfate, Wheat Starch, Wheat Flour, Contains 2% or Less of: Enzymes [Wheat], Salt), Salt, Caramel Color, Dough Conditioner (Wheat Flour, Diacetyl Tartaric Acid Esters of Mono-Diglycerides [DATEM], Contains 2% or Less of: Soybean Oil, Enzymes [Wheat], Ascorbic Acid [Vitamin C], L-Cysteine Hydrochloride). OVEN ROASTED TURKEY BREAST: Turkey Breast, Turkey Broth, Less Than 2% Salt, Vinegar, Food Starch, Natural Flavor. CHEDDAR CHEESE: Pasteurized Milk, Cheese Culture, Salt, Enzymes, Color Added.

Nutritionals and Ingredients (Consumer or Base GTIN: 00044500975932)

Representation of label(s). The actual nutritional label(s) on the package may vary slightly

Nutrition Facts (Unprepared)	
1 Servings Per Container	
Serving Size	231 g
Amount Per Serving	
Calories	500
	% Daily Value*
Saturated Fat 6 g	30%
Trans Fat 0 g	
Cholesterol 50 mg	17%
Sodium 1190 mg	52%
Total Carbohydrate 62 g	23%
Dietary Fiber 5 g	18%
Sugar 10 g	0%
Added Sugar 2 g	4%
Protein 33 g	
Vitamin D 0.1 µg	0%
Potassium 220 mg	4%
Calcium 350 mg	25%
Iron 4 mg	20%
Vitamin A	0%
Vitamin C 0 mg	0%
* The % Daily Value (DV) tells you how much a nutrient in a serving of food contributes to a daily diet. 2,000 calories a day is used for general nutrition advice.	

Ingredients: WHEAT BREAD: Enriched Wheat Flour (Wheat Flour, Malted Barley Flour, Niacin, Reduced Iron, Thiamine Mononitrate, Riboflavin, Folic Acid), Water, Dough Base (Dextrose, Sugar, Soybean Oil, Salt, Mono-And Diglycerides, Defatted Soy Flour, Corn Starch, Contains 2% or Less of: Monocalcium Phosphate, Calcium Stearoyl Lactylate [CSL], Ascorbic Acid [Vitamin C], Potassium Iodate, Soy Lecithin, L-Cysteine Hydrochloride, Natural And Artificial Flavor, Enzymes [Wheat]), Cracked Wheat Flour, Honey, Yeast, Calcium Propionate, Dough Conditioner (Calcium Sulfate, Wheat Starch, Wheat Flour, Contains 2% or Less of: Enzymes [Wheat], Salt), Salt, Caramel Color, Dough Conditioner (Wheat Flour, Diacetyl Tartaric Acid Esters of Mono-Diglycerides [DATEM], Contains 2% or Less of: Soybean Oil, Enzymes [Wheat], Ascorbic Acid [Vitamin C], L-Cysteine Hydrochloride). OVEN ROASTED TURKEY BREAST: Turkey Breast, Turkey Broth, Less Than 2% Salt, Vinegar, Food Starch, Natural Flavor. CHEDDAR CHEESE: Pasteurized Milk, Cheese Culture, Salt, Enzymes, Color Added.

Allergens and Diet (Case GTIN: 10044500975939)

Allergen Values (FDA)
Contains: Milk, Soy, Wheat
Free From: Peanuts, Tree Nuts, Eggs, Fish, Crustaceans



GTIN CODE: 10044500325505
LEGACY PRODUCT CODE: 32550
PRODUCT CODE: 10000032550

Hillshire Farm® Cheddarwurst® Smoked Sausage Wrapped in a Bagel, 4.5 oz

Ingredients

Bagel: Enriched Flour (Wheat Flour, Malted Barley Flour, Niacin, Reduced Iron, Thiamine Mononitrate, Riboflavin, Folic Acid), Water, Sugar, Contains 2% Or Less Of: Shortening (Palm Oil And Soybean Oil), Yeast, Dried Onion, Wheat Gluten, Dried Whey, Salt, Poppy Seeds, Dried Garlic, Dried Onions, Malt Syrup (Corn Syrup, Malt), Cheese Smoked Sausage: Meat Ingredients (Pork, Beef), Water, Wisconsin Cheddar Cheese (Pasteurized Milk, Cheese Cultures, Salt, Enzymes, Annatto [Color], Natamycin [Natural Mold Inhibitor]), Corn Syrup, Contains 2% Or Less Of: Natural Spice, Natural Flavorings, Salt, Potassium Lactate, Sodium Diacetate, Monosodium Glutamate, Vitamin C (Ascorbic Acid), Sodium Nitrite.

ALLERGENS

[Milk](#), [Soy](#), [Wheat](#)

Packaging information

MASTER CASE CUBE	0.4741
GROSS WEIGHT	7.35 lbs
HEIGHT	7.5
LENGTH	14.6875
NET WEIGHT	6.75
WIDTH	7.4375

PALLET HI	5
TI	15

Storage

SHELF LIFE:	365 Days
STORAGE TEMPERATURE - MAXIMUM:	0 °F
STORAGE TEMPERATURE - MINIMUM:	0 °F
STORAGE METHOD:	Frozen

Preparation

MICROWAVE:

MicrowaveHeat from refrigerated. Remove plastic film and wrap product in a paper towel or napkin. Heat sandwich in 1000 watt microwave for approximate 55 seconds to 165°F. Microwave ovens may vary. Adjust accordingly. CAUTION PRODUCT WILL BE HOT. Let stand in microwave 1 minute before serving. For food safety and quality, heat to an internal temperature of 160°F before serving.

THAW:

Thawing InstructionsRefrigerate to thaw.

Nutritional information

NUTRITION FACTS

1 Servings Per Container

Serving Size 127g

Amount Per Serving

Calories 360

Daily Value % *

Total Fat	16g	25%
Saturated Fat	6g	30%
Trans Fat	0g	
Cholesterol	35mg	12%
Sodium	670mg	28%
Total Carbohydrate	38g	13%
Dietary Fiber	2g	7%
Total Sugars	4g	
Includes Added Sugars		%
Protein	15g	
Vitamin D		%
Calcium	mg	8%
Iron	mg	15%
Potassium		%

*The % Daily Value tells you how much a nutrient in a serving of food contributes to a daily diet. 2,000 calories a day is used for general nutrition advice.

To inquire if a signed copy of the product formulation statement or Child Nutrition statement is available for this item, please contact the Tyson Foodservice Customer Relations Team at 1-800-261-4754. Or email tysonfoodservice@casupport.com.

Need help?

Call us at 1-800-261-4754

© 2019 Tyson Foods, Inc. Trademarks and registered trademarks are owned by Tyson Foods, Inc. or its subsidiaries.

CASE:

ADD TO

ADD TO FAVOI

SHARE VIA EM

PRINT (/MOD)

DOWNLOAD (/



DOT 712500
MFG 10000097585
GTIN 10044500975854

Hillshire Farm(R) CHICKEN CAESAR WRAP, 7.7oz.

12-7.7 OUNCE

6.86 lbs, 0.55 cube, 10 per layer, 70 per pallet

[HELP US IMPROVE PRODUCT INFORMATION? \(/SURVEY/PRODUCTDETAIL?ITEMNUMBER=712500\)](#)

UOM	ORDER SIZE	THE PRICE	AVAILABILITY
CASE	5,000 #+	\$35.9800	Stocked
	10,000 #+	\$35.9800	
	20,000 #+	\$35.9800	
	40,000 #+	\$35.9800	



AT A GLANCE

NUTRITION INFORMATION

GTIN

Hillshire Farm® CHICKEN CAESAR WRAP, 7.7oz.

Dot #: 712500
Mfr #: 10000097585
GTIN: 10044500975854
Supplier: Tyson Foods, Inc.
Description: Hillshire Farm® CHICKEN CAESAR WRAP, 7.7oz.

Product Information

Classification:	Sandwiches/Filled Rolls/Wraps (Frozen) (10000254)
Dimensions (HxWxD):	5.63 x 10.81 x 15.5 Inch
Weight Gross / Net:	6.86 Pound / 5.78 Pound
Origin:	(US) UNITED STATES
Storage Temperature:	0° to 0°
Pallet Configuration:	Ti:10 Hi:7

Features and Benefits (Case GTIN: 10044500975854)

Features:	Marketing Message Coming Soon
Preparation and Cooking:	Unspecified - Preparation Instructions Coming Soon
Storage:	Frozen

Features and Benefits (Consumer or Base GTIN: 00044500975857)

Preparation and Cooking:	Unspecified - Preparation Instructions Coming Soon
Storage:	Frozen

Nutritionals and Ingredients (Case GTIN: 10044500975854)

Information Not Available

Allergens and Diet (Case GTIN: 10044500975854)

Information Not Available



(/Home/Index).

Shop By ▼

Select Customer

(/Modal/ChooseCustomer).search

Q

Search By: [Multiple Item Numbers](#) ([/Search/ByNumbers](#)).

Hello, M

Nutrition Facts Serving size 1 sandwich, Amount per serving:
Calories 380, **Total Fat** 11g (14% DV), **Saturated Fat** 4.5g (23% DV), **Trans Fat** 0g,
Cholesterol 25mg (6% DV), **Sodium** 940mg (41% DV), **Total Carbohydrate** 55g (20% DV),
Dietary Fiber 4g (14% DV), **Total Sugars** 13g (includes 5g Added Sugars, 10% DV), **Protein** 16g,
Vitamin D 5mg (25% DV), **Calcium** 164mg (15% DV), **Iron** 3mg (15% DV), **Potassium** 228mg (4% DV). The % Daily Value (DV) tells you how much a nutrient in a serving of food contributes to a daily diet. 2,000 calories a day is used for general nutrition advice.

HILLSHIRE FARM
HILLSHIRE BRANDS RETAIL FROZEN
(/PRODUCTDETAIL/SUPPLIERSITEREDIRECT?
URL=HTTP%3A%2F%2FWWW.HILLSHIREBRANDS.COM%2F)

DOT 712494
MFG 10000097587
GTIN 10044500975878

Hillshire Farm(R) CHICKEN SALAD WEDGE, 5.9 oz.

10-5.9 OUNCE

4.13 lbs, 0.45 cube, 15 per layer, 105 per pallet

[HELP US IMPROVE PRODUCT INFORMATION? \(/SURVEY/PRODUCTDETAIL?ITEMNUMBER=712494\)](#)

	UOM	ORDER SIZE	THE PRICE	AVAILABILITY
	CASE	5,000 #+	\$20.6100	Stocked
		10,000 #+	\$20.6100	
		20,000 #+	\$20.6100	
		40,000 #+	\$20.6100	
AT A GLANCE				
NUTRITION INFORMATION				
GTIN				

Hillshire Farm® CHICKEN SALAD WEDGE, 5.9 oz.

Dot #: 712494

Mfr #: 10000097587

GTIN: 10044500975878

Supplier: Tyson Foods, Inc.

Description: Hillshire Farm® CHICKEN SALAD WEDGE, 5.9 oz.

Product Information

Classification: Sandwiches/Filled Rolls/Wraps (Frozen) (10000254)

Dimensions (HxWxD): 6.13 x 9.44 x 13.31 Inch

Weight Gross / Net: 4.12 Pound / 3.69 Pound

Origin: (US) UNITED STATES

Storage Temperature: 0° to 0°

Pallet Configuration: Ti:15 Hi:7

Features and Benefits (Case GTIN: 10044500975878)

Features: Marketing Message Coming Soon

Preparation and Cooking: Unspecified - Preparation Instructions Coming Soon

Storage: Frozen

Features and Benefits (Consumer or Base GTIN: 00044500975871)

Preparation and Cooking: Unspecified - Preparation Instructions Coming Soon

Storage: Frozen

Nutritionals and Ingredients (Case GTIN: 10044500975878)

Information Not Available

Allergens and Diet (Case GTIN: 10044500975878)

Information Not Available



GTIN CODE: 10044500113942
LEGACY PRODUCT CODE: 11394
PRODUCT CODE: 10000011394

Hillshire Farm® Fully Cooked Jalapeno Mesquite Skinless Dinner Sausage Links, 5:1 Links Per Lb, 6 Inch, Frozen

Ingredients

Pork, Water, Beef, Diced Jalapeno Peppers (Jalapeno Peppers, Vinegar, Salt, Acetic Acid), Salt, Contains 2% or Less: Sorbitol, Natural Flavors, Potassium Lactate, Sodium Phosphate, Paprika, Monosodium Glutamate, Sodium Erythorbate, Sodium Diacetate, Sodium Nitrite.

Packaging information

MASTER CASE CUBE	0.3436
GROSS WEIGHT	10.62 lbs
HEIGHT	4.125
LENGTH	13.3125
NET WEIGHT	10
WIDTH	10.8125
PALLET HI	9
TI	11

Storage

SHELF LIFE:	180 Days
STORAGE TEMPERATURE - MAXIMUM:	0 °F
STORAGE TEMPERATURE - MINIMUM:	0 °F
STORAGE METHOD:	Frozen

Preparation

CONVECTION:

Convection OvenHeat sausage to an internal temperature of 165°F; hold at 165°F for 1 minute before serving;hold at 140°F or higher for a maximum of 4 hours. Note: Due to variances in cooking equipment heating times are approximate and may require adjustment.

GRILL:

Roller GrillPre-heat Roller Grill on Medium-High setting for 15 minutes. Turn temperature to Medium or "Heat" setting. Heat 20-25 minutes or until sausage reach an internal temperature of 165°F. Once internal temperature of 165°F is reached, turn roller grill down to low or "Hold" setting to prevent blistering or scorching. Hold product at 140°F or higher. DO NOT HOLD LONGER THAN 4 HOURS! Remember: the first sausage heated should be the first sausage served!

Nutritional information

NUTRITION FACTS

50 Servings Per Container

Serving Size 91g

Amount Per Serving

Calories 290

Daily Value % *

Total Fat 26g 40%

Saturated Fat 9g 45%

Trans Fat 0g

Cholesterol 55mg 18%

Sodium 1140mg 48%

Total Carbohydrate 2g 1%

Dietary Fiber 0g 0%

Total Sugars 0g

Includes Added Sugars %

Protein 11g

Vitamin D %

Calcium mg 2%

Iron mg 4%

Potassium %

*The % Daily Value tells you how much a nutrient in a serving of food contributes to a daily diet. 2,000 calories a day is used for general nutrition advice.

To inquire if a signed copy of the product formulation statement or Child Nutrition statement is available for this item, please contact the Tyson Foodservice Customer Relations Team at 1-800-261-4754. Or email tysonfoodservice@casupport.com.

Need help?

Call us at 1-800-261-4754

© 2019 Tyson Foods, Inc. Trademarks and registered trademarks are owned by Tyson Foods, Inc. or its subsidiaries.



GTIN CODE: 10044500215462
LEGACY PRODUCT CODE: 21546
PRODUCT CODE: 10000021546

Hillshire Farm® Fully Cooked Pepperjack Skinless Dinner Sausage Links, 5:1 Links Per Pound, 6 Inch, Frozen

Ingredients

Meat Ingredients (Pork, Beef) Water, Pasteurized Process Monterey Jack Cheese With Peppers (Cultured Milk, Cream, Red Bell Peppers, Water, Sodium Phosphate, Salt, Sorbic Acid, Lactic Acid, Artificial Color, Enzymes), Diced Jalapeno Peppers (Jalapeno Peppers, Vinegar, Salt, Acetic Acid), Contains 2% or Less: Salt, Modified Corn Starch, Sorbitol, Potassium Lactate, Sodium Phosphate, Natural Flavors, Paprika, Sodium Diacetate, Sodium Erythorbate, Sodium Nitrite, Autolyzed Yeast Extract.

ALLERGENS

[Milk](#)

Packaging information

MASTER CASE CUBE 0.3436

GROSS WEIGHT 10.615 lbs

HEIGHT 4.125

LENGTH 13.3125

NET WEIGHT 10

WIDTH 10.8125

PALLET HI 9

TI 11

Storage

SHELF LIFE: 180 Days

STORAGE TEMPERATURE - MAXIMUM: 0 °F

STORAGE TEMPERATURE - MINIMUM: 0 °F

STORAGE METHOD: Frozen

Preparation

GRILL:

Roller Grill From thawed state, heat links over medium heat for up to 10 minutes and then reduce temperature to low. Cook to internal temperature of 165°F. Maintain 140°F internal temperature.

STEAM:

Steamer Place smoked sausage in half steam pan. Place in steamer and steam for 3 minutes. Cook to internal temperature of 165°F. Maintain 140°F internal temperature.

Nutritional information

NUTRITION FACTS

50 Servings Per Container

Serving Size 91g

Amount Per Serving

Calories 300

Daily Value % *

Total Fat 27g 42%

Saturated Fat 10g 50%

Trans Fat 0g

Cholesterol 60mg 20%

Sodium 1020mg 43%

Total Carbohydrate 3g 1%

Dietary Fiber 0g 0%

Total Sugars 0g

Includes Added Sugars %

Protein 11g

Vitamin D %

Calcium mg 2%

Iron mg 4%

Potassium %

*The % Daily Value tells you how much a nutrient in a serving of food contributes to a daily diet. 2,000 calories a day is used for general nutrition advice.

To inquire if a signed copy of the product formulation statement or Child Nutrition statement is available for this item, please contact the Tyson Foodservice Customer Relations Team at 1-800-261-4754. Or email tysonfoodservice@casupport.com.

Need help?

Call us at 1-800-261-4754

© 2019 Tyson Foods, Inc. Trademarks and registered trademarks are owned by Tyson Foods, Inc. or its subsidiaries.



GTIN CODE: 10077900284967
LEGACY PRODUCT CODE: 28496
PRODUCT CODE: 10000028496

Hillshire Farm® Fully Cooked Polish Skinless Dinner Sausage Links, 5:1 Links Per Lb,
6 Inch, Frozen

Ingredients

Pork, Water, Beef, Salt, Contains 2% or Less of: Natural Flavors, Paprika, Sorbitol, Potassium Lactate, Sodium Phosphate, Sodium Diacetate, Monosodium Glutamate, Sodium Erythorbate, Sodium Nitrite.

Packaging information

MASTER CASE CUBE	0.3248
GROSS WEIGHT	10.489 lbs
HEIGHT	3.81
LENGTH	13.625
NET WEIGHT	10
WIDTH	10.8125

PALLET HI	9
TI	11

Storage

SHELF LIFE:	180 Days
STORAGE TEMPERATURE - MAXIMUM:	10 °F
STORAGE TEMPERATURE - MINIMUM:	-10 °F
STORAGE METHOD:	Frozen

Preparation

GRILL:

Roller Grill From thawed state, heat links over medium heat for up to 10 minutes and then reduce temperature to low. Cook to internal temperature of 165°F. Maintain 140°F internal temperature.

STEAM:

Steamer Place smoked sausage in half steam pan. Place in steamer and steam for 3 minutes. Cook to internal temperature of 165°F. Maintain 140°F internal temperature.

Nutritional information

NUTRITION FACTS

50 Servings Per Container

Serving Size 91g

Amount Per Serving

Calories 280

Daily Value % *

Total Fat	26g	40%
Saturated Fat	13g	66%
Trans Fat	0.5g	
Cholesterol	55mg	18%
Sodium	1160mg	48%
Total Carbohydrate	0g	0%
Dietary Fiber	0g	0%
Total Sugars	0g	
Includes Added Sugars		%
Protein	12g	
Vitamin D		%
Calcium	mg	0%
Iron	mg	8%
Potassium		%

*The % Daily Value tells you how much a nutrient in a serving of food contributes to a daily diet. 2,000 calories a day is used for general nutrition advice.

To inquire if a signed copy of the product formulation statement or Child Nutrition statement is available for this item, please contact the Tyson Foodservice Customer Relations Team at 1-800-261-4754. Or email tysonfoodservice@casupport.com.

Need help?

Call us at 1-800-261-4754

© 2019 Tyson Foods, Inc. Trademarks and registered trademarks are owned by Tyson Foods, Inc. or its subsidiaries.



Shop By ▼

Select Customer

Search By: [Multiple Item Numbers \(/Search/ByNumbers\)](#)

Hello, M

[\(/Home/Index\)](#)

HILLSHIRE FARM
HILLSHIRE BRANDS RETAIL FROZEN
 (/PRODUCTDETAIL/SUPPLIERSITEREDIRECT?
 URL=HTTP%3A%2F%2FWWW.HILLSHIREBRANDS.COM%2F)

DOT 712498
 MFG 10000097590
 GTIN 10044500975908

Hillshire Farm(R) ITALIAN SUB, 8.2 oz.

8-8.2 OUNCE

4.73 lbs, 0.62 cube, 10 per layer, 60 per pallet

[HELP US IMPROVE PRODUCT INFORMATION? \(/SURVEY/PRODUCTDETAIL?ITEMNUMBER=712498\)](#)



UOM	ORDER SIZE	THE PRICE	AVAILABILITY
CASE	5,000 #+	\$23.4300	Special Order available for 5/21/2020 deliveries
	10,000 #+	\$23.4300	
	20,000 #+	\$23.4300	
	40,000 #+	\$23.4300	

AT A GLANCE

NUTRITION INFORMATION

GTIN

AVAILABILITY



Hillshire Farm® ITALIAN SUB, 8.2 oz.

Dot #: 712498
Mfr #: 10000097590
GTIN: 10044500975908
Supplier: Tyson Foods, Inc.
Description: Hillshire Farm® ITALIAN SUB, 8.2 oz.

Product Information

Classification: Sandwiches/Filled Rolls/Wraps (Frozen) (10000254)
Dimensions (HxWxD): 6.38 x 10.81 x 15.56 Inch
Weight Gross / Net: 4.73 Pound / 4.1 Pound
Origin: (US) UNITED STATES
Storage Temperature: 0° to 0°
Pallet Configuration: Ti:10 Hi:6

Features and Benefits (Case GTIN: 10044500975908)

Features: Marketing Message Coming Soon
Preparation and Cooking: Unspecified - Preparation Instructions Coming Soon
Storage: Frozen

Features and Benefits (Consumer or Base GTIN: 00044500975901)

Features: Marketing Message Coming Soon
Preparation and Cooking: Unspecified - Preparation Instructions Coming Soon
Storage: Frozen

Nutritionals and Ingredients (Case GTIN: 10044500975908)

Information Not Available

Allergens and Diet (Case GTIN: 10044500975908)

Information Not Available



(/Home/Index).

Shop By ▼

Select Customer

(/Modal/ChooseCustomer).search

Search By: [Multiple Item Numbers](#) ([/Search/ByNumbers](#)).

Hello, M

Nutrition Facts Serv. size: 1 sandwich, Amount per serving:

Calories 370, **Total Fat** 10g (13% DV), **Sat. Fat** 5g (25% DV), **Trans Fat** 0g, **Cholest.** 40mg (13% DV), **Sodium** 1250mg (54% DV), **Total Carb.** 51g (19% DV), **Fiber** 3g (11% DV), **Total Sugars** 9g (Incl. 6g Added Sugars, 12% DV), **Protein** 20g, **Vit. D** (0% DV), **Calcium** (20% DV), **Iron** (15% DV), **Potas.** (6% DV)

HILLSHIRE FARM
HILLSHIRE BRANDS RETAIL FROZEN
(/PRODUCTDETAIL/SUPPLIERSITEREDIRECT?
URL=HTTP%3A%2F%2FWWW.HILLSHIREBRANDS.COM%2F)

DOT 712499
MFG 10000097588
GTIN 10044500975885

Hillshire Farm(R) SMOKY HAM & CHEDDAR WEDGE, 6.1 oz.

10-6.1 OUNCE

4.69 lbs, 0.45 cube, 15 per layer, 105 per pallet

[HELP US IMPROVE PRODUCT INFORMATION? \(/SURVEY/PRODUCTDETAIL?ITEMNUMBER=712499\)](#)



UOM	ORDER SIZE	THE PRICE	AVAILABILITY
CASE	5,000 #+	\$20.6300	Stocked
	10,000 #+	\$20.6300	
	20,000 #+	\$20.6300	
	40,000 #+	\$20.6300	

AT A GLANCE

NUTRITION INFORMATION

GTIN

Hillshire Farm® SMOKY HAM & CHEDDAR WEDGE, 6.1 oz.

Dot #: 712499

Mfr #: 10000097588

GTIN: 10044500975885

Supplier: Tyson Foods, Inc.

Description: Hillshire Farm® SMOKY HAM & CHEDDAR WEDGE, 6.1 oz.

Product Information

Classification:	Sandwiches/Filled Rolls/Wraps (Frozen) (10000254)
Dimensions (HxWxD):	6.13 x 9.44 x 13.31 Inch
Weight Gross / Net:	4.68 Pound / 3.81 Pound
Origin:	(US) UNITED STATES
Storage Temperature:	0° to 0°
Pallet Configuration:	Ti:15 Hi:7

Features and Benefits (Case GTIN: 10044500975885)

Features:	Marketing Message Coming Soon
Preparation and Cooking:	Unspecified - Preparation Instructions Coming Soon
Storage:	Frozen

Features and Benefits (Consumer or Base GTIN: 00044500975888)

Preparation and Cooking:	Unspecified - Preparation Instructions Coming Soon
Storage:	Frozen

Nutritionals and Ingredients (Case GTIN: 10044500975885)

Information Not Available

Allergens and Diet (Case GTIN: 10044500975885)

Information Not Available

Select Customer

Q

 Hello, M

DOT 712495
MFG 10000097596
GTIN 10044500975960

4.17 lbs, 0.45 cube, 15 per layer, 105 per pallet

CASE:

ADD TO FAVOI

SHARE VIA EM

PRINT (/MOD)

DOWNLOAD (/



UOM	ORDER SIZE	THE PRICE	AVAILABILITY
CASE	5,000 #+	\$20.6100	Stocked
	10,000 #+	\$20.6100	
	20,000 #+	\$20.6100	
	40,000 #+	\$20.6100	

NUTRITION INFORMATION

GTIN

<

Dot #: 712495
Mfr #: 10000097596
GTIN: 10044500975960

Supplier: Tyson Foods, Inc.

Description: Hillshire Farm® TUNA SALAD WEDGE,
5.9 oz.

Classification:	Sandwiches/Filled Rolls/Wraps (Frozen) (10000254)
Dimensions (HxWxD):	6.13 x 9.44 x 13.31 Inch
Weight Gross / Net:	4.17 Pound / 3.69 Pound
Origin:	(US) UNITED STATES
Storage Temperature:	0° to 0°
Pallet Configuration:	Ti:15 Hi:7

Features and Benefits (Case GTIN: 10044500975960)

Features:	Marketing Message Coming Soon
Preparation and Cooking:	Unspecified - Preparation Instructions Coming Soon
Storage:	Frozen

Features and Benefits (Consumer or Base GTIN: 00044500975963)

Preparation and Cooking:	Unspecified - Preparation Instructions Coming Soon
Storage:	Frozen

Nutritionals and Ingredients (Case GTIN: 10044500975960)

Information Not Available

Allergens and Diet (Case GTIN: 10044500975960)

Information Not Available



HILLSHIRE FARM
HILLSHIRE BRANDS RETAIL FROZEN
(/PRODUCTDETAIL/SUPPLIERSITEREDIRECT?
URL=HTTP%3A%2F%2FWWW.HILLSHIREBRANDS.COM%2F)

DOT 712489
MFG 10000097595
GTIN 10044500975953

Hillshire Farm(R) TURKEY BREAST &
NATURAL CHEDDAR SUB, 7 oz.

8-7 OUNCE

4.13 lbs, 0.62 cube, 10 per layer, 60 per pallet

[HELP US IMPROVE PRODUCT INFORMATION? \(/SURVEY/PRODUCTDETAIL?ITEMNUMBER=712489\)](#)



UOM	ORDER SIZE	THE PRICE	AVAILABILITY
CASE	5,000 #+	\$20.5300	Special Order available for 5/21/2020 deliveries
	10,000 #+	\$20.5300	
	20,000 #+	\$20.5300	
	40,000 #+	\$20.5300	

AT A GLANCE

NUTRITION INFORMATION

GTIN

AVAILABILITY

Hillshire Farm® TURKEY BREAST & NATURAL CHEDDAR SUB, 7 oz.

Dot #:

712489

Mfr #:

10000097595

GTIN:

10044500975953

Supplier:

Tyson Foods, Inc.

Description:

Hillshire Farm® TURKEY BREAST &
NATURAL CHEDDAR SUB, 7 oz.

Product Information

Classification:

Sandwiches/Filled Rolls/Wraps (Frozen) (10000254)

Dimensions (HxWxD):

6.38 x 10.81 x 15.56 Inch

Weight Gross / Net:

4.13 Pound / 3.5 Pound

Origin:

(US) UNITED STATES

Storage Temperature:

0° to 0°

Pallet Configuration:

Ti:10 Hi:6

Features and Benefits (Case GTIN: 10044500975953)

Preparation and Cooking:

Unspecified - Preparation Instructions Coming Soon

Storage:

Frozen

Features and Benefits (Consumer or Base GTIN: 00044500975956)

Features:

Marketing Message Coming Soon

Preparation and Cooking:

Unspecified - Preparation Instructions Coming Soon

Storage:

Frozen

Nutritionals and Ingredients (Case GTIN: 10044500975953)

Information Not Available

Allergens and Diet (Case GTIN: 10044500975953)

Information Not Available

Shop By

Select Customer

(/Modal/ChooseCustomer)
search



Search By: Multiple Item Numbers (/Search/ByNumbers).

 Hello, M

(/Home/Index).

HILLSHIRE FARM
HILLSHIRE BRANDS RETAIL FROZEN
(/PRODUCTDETAIL/SUPPLISITEREDIRECT?
URL=HTTP%3A%2F%2FWWW.HILLSHIREBRANDS.COM%2F)

DOT 712492
MFG 10000097594
GTIN 10044500975946

CASE:

Italian Hearty Wedge

6-.538 POUND

4.08 lbs, 0.45 cube, 15 per layer, 105 per pallet

[HELP US IMPROVE PRODUCT INFORMATION? \(/SURVEY/PRODUCTDETAIL?ITEMNUMBER=712492\)](#)

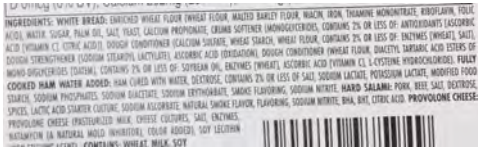
ADD TO

ADD TO FAVOI

SHARE VIA EM

PRINT (/MODA

DOWNLOAD (/



UOM	ORDER SIZE	THE PRICE	AVAILABILITY
CASE	5,000 #+	\$16.7000	Stocked
	10,000 #+	\$16.7000	
	20,000 #+	\$16.7000	
	40,000 #+	\$16.7000	



AT A GLANCE

NUTRITION INFORMATION

GTIN

Italian Hearty Wedge

Dot #: 712492
Mfr #: 10000097594
GTIN: 10044500975946
Supplier: Tyson Foods, Inc.
Description: Italian Hearty Wedge

Product Information

Classification:	Sandwiches/Filled Rolls/Wraps (Frozen) (10000254)
Dimensions (HxWxD):	6.12 x 9.44 x 13.31 Inch
Weight Gross / Net:	4.08 Pound / 3.23 Pound
Origin:	(US) UNITED STATES
Storage Temperature:	0° to 0°
Pallet Configuration:	Ti:15 Hi:7
Servings Per Container:	1

Features and Benefits (Case GTIN: 10044500975946)

Features:	Marketing Message Coming Soon
Preparation and Cooking:	Unspecified - NoneNone
Storage:	Frozen

Features and Benefits (Consumer or Base GTIN: 00044500975949)

Features:	Marketing Message Coming Soon
Preparation and Cooking:	Unspecified - NoneNone
Storage:	Frozen

Nutritionals and Ingredients (Case GTIN: 10044500975946)

Representation of label(s). The actual nutritional label(s) on the package may vary slightly

Nutrition Facts (Unprepared)	
1 Servings Per Container	
Serving Size	241 g
Amount Per Serving	
Calories	520
% Daily Value*	
Saturated Fat 8 g	40%

Trans Fat 0 g	
Cholesterol 55 mg	18%
Sodium 1970 mg	86%
Total Carbohydrate 63 g	23%
Dietary Fiber 4 g	14%
Sugar 10 g	0%
Added Sugar 9 g	18%
Protein 30 g	0%
Vitamin D 0.3 µg	2%
Potassium 620 mg	15%
Calcium 280 mg	20%
Iron 4.1 mg	25%
Vitamin A	0%
Vitamin C 0 mg	0%
* The % Daily Value (DV) tells you how much a nutrient in a serving of food contributes to a daily diet. 2,000 calories a day is used for general nutrition advice.	

Ingredients: WHITE BREAD: Enriched Wheat Flour (Wheat Flour, Malted Barley Flour, Niacin, Reduced Iron, Thiamine Mononitrate, Riboflavin, Folic Acid), Water, Sugar, Palm Oil, Salt, Yeast, Calcium Propionate, Dough Conditioner (Monoglycerides, Contains 2% or Less Of: Antioxidants [Ascorbic Acid [Vitamin C], Citric Acid]), Dough Conditioner (Calcium Sulfate, Wheat Starch, Wheat Flour, Contains 2% or Less of: Enzymes [Wheat], Salt), Dough Strengthenener (Sodium Stearoyl Lactylate), Ascorbic Acid (Oxidation), Dough Conditioner (Wheat Flour, Diacetyl Tartaric Acid Esters of Mono-Diglycerides [DATEM], Contains 2% or Less Of: Soybean Oil, Enzymes [Wheat], Ascorbic Acid [Vitamin C], L-Cysteine Hydrochloride). FULLY COOKED HAM WATER ADDED (SMOKE FLAVOR ADDED): Ham Cured with Water, Dextrose, Contains 2%or Less of Salt, Sodium Lactate, Potassium Lactate, Modified Food Starch, Sodium Phosphates, Sodium Diacetate, Sodium Erythorbate, Smoke Flavoring, Sodium Nitrite. HARD SALAMI: Pork, Beef, Salt, Dextrose, Spices, Lactic Acid Starter Culture, Sodium Ascorbate, Natural Smoke Flavor, Flavoring, Sodium Nitrite, BHA, BHT, Citric Acid. PROVOLONE CHEESE: Pasteurized Milk, Cheese Culture, Salt, Enzymes.

Nutritionals and Ingredients (Consumer or Base GTIN: 00044500975949)

Representation of label(s). The actual nutritional label(s) on the package may vary slightly

Nutrition Facts (Unprepared)	
1 Servings Per Container	
Serving Size	241 g
Amount Per Serving	
Calories	520
% Daily Value*	
Saturated Fat 8 g	40%
Trans Fat 0 g	
Cholesterol 55 mg	18%
Sodium 1970 mg	86%
Total Carbohydrate 63 g	23%
Dietary Fiber 4 g	14%
Sugar 10 g	0%
Added Sugar 9 g	18%
Protein 30 g	0%
Vitamin D 0.3 µg	2%
Potassium 620 mg	15%
Calcium 280 mg	20%
Iron 4.1 mg	25%
Vitamin A	0%
Vitamin C 0 mg	0%
* The % Daily Value (DV) tells you how much a nutrient in a serving of food contributes to a daily diet. 2,000 calories a day is used for general nutrition advice.	

Ingredients: WHITE BREAD: Enriched Wheat Flour (Wheat Flour, Malted Barley Flour, Niacin, Reduced Iron, Thiamine Mononitrate, Riboflavin, Folic Acid), Water, Sugar, Palm Oil, Salt, Yeast, Calcium Propionate, Dough Conditioner (Monoglycerides, Contains 2% or Less Of: Antioxidants [Ascorbic Acid [Vitamin C], Citric Acid]), Dough Conditioner (Calcium Sulfate, Wheat Starch, Wheat Flour, Contains 2% or Less of: Enzymes [Wheat], Salt), Dough Strengthenener (Sodium Stearoyl Lactylate), Ascorbic Acid (Oxidation), Dough Conditioner (Wheat Flour, Diacetyl Tartaric Acid Esters of Mono-Diglycerides [DATEM], Contains 2% or Less Of: Soybean Oil, Enzymes [Wheat], Ascorbic Acid [Vitamin C], L-Cysteine Hydrochloride). FULLY COOKED HAM WATER ADDED (SMOKE FLAVOR ADDED): Ham Cured with Water, Dextrose, Contains 2%or Less of Salt, Sodium Lactate, Potassium Lactate, Modified Food Starch, Sodium Phosphates, Sodium Diacetate, Sodium Erythorbate, Smoke Flavoring, Sodium Nitrite. HARD SALAMI: Pork, Beef, Salt, Dextrose, Spices, Lactic Acid Starter Culture, Sodium Ascorbate, Natural Smoke Flavor, Flavoring, Sodium Nitrite, BHA, BHT, Citric Acid. PROVOLONE CHEESE: Pasteurized Milk, Cheese Culture, Salt, Enzymes.

Allergens and Diet (Case GTIN: 10044500975946)

Allergen Values (FDA)

Nutrition Facts Serving Size 1 wrap, Amount Per Serving
Calories 650, Calories from Fat 260, Total Fat 29g (45% DV),
Saturated Fat 10g (50% DV), Trans Fat 0.5g, Cholesterol 60mg
(20% DV), Sodium 1480mg (62% DV), Total Carbohydrate 68g
(22% DV), Dietary Fiber 2g (8% DV), Sugars 3g, Protein 30g,
Vitamin A (4% DV), Vitamin C (0% DV), Calcium (30% DV), Iron
(25% DV) Percent Daily Values are based on a 2,000 calorie diet

HILLSHIRE FARM
HILLSHIRE BRANDS RETAIL FROZEN
(/PRODUCTDETAIL/SUPPLIERSITEREDIRECT?
URL=HTTP%3A%2F%2FWWW.HILLSHIREBRANDS.COM%2F) DOT 712496
MFG 10000097586
GTIN 10044500975861

Southwest Turkey Wrap

12-.55 POUND

7.68 lbs, 0.55 cube, 10 per layer, 70 per pallet

HELP US IMPROVE PRODUCT INFORMATION? (/SURVEY/PRODUCTDETAIL?
ITEMNUMBER=712496)

UOM	ORDER SIZE	THE PRICE	AVAILABILITY
CASE	5,000 #+	\$36.1800	Stocked
	10,000 #+	\$36.1800	
	20,000 #+	\$36.1800	
	40,000 #+	\$36.1800	



AT A GLANCE

NUTRITION INFORMATION

GTIN

Southwest Turkey Wrap

Dot #: 712496
Mfr #: 10000097586
GTIN: 10044500975861
Supplier: Tyson Foods, Inc.
Description: Southwest Turkey Wrap

Product Information

Classification:	Sandwiches/Filled Rolls/Wraps (Frozen) (10000254)
Dimensions (HxWxD):	5.62 x 10.81 x 15.5 Inch
Weight Gross / Net:	7.68 Pound / 6.6 Pound
Origin:	(US) UNITED STATES
Storage Temperature:	0° to 0°
Pallet Configuration:	Ti:10 Hi:7
Servings Per Container:	1

Features and Benefits (Case GTIN: 10044500975861)

Preparation and Cooking: Unspecified - None
Storage: Frozen

Features and Benefits (Consumer or Base GTIN: 00044500975864)

Preparation and Cooking: Unspecified - None
Storage: Frozen

Nutritionals and Ingredients (Case GTIN: 10044500975861)

Representation of label(s). The actual nutritional label(s) on the package may vary slightly

Nutrition Facts (Unprepared)	
1 Servings Per Container	
Serving Size	246 g
Amount Per Serving	
Calories	640
% Daily Value*	
Saturated Fat 10 g	50%
Trans Fat 0.5 g	
Cholesterol 60 mg	20%

Sodium 1530 mg	64%
Total Carbohydrate 65 g	22%
Dietary Fiber 2 g	8%
Sugar 2 g	0%
Protein 31 g	0%
Calcium 300 mg	30%
Iron 5 mg	25%
Vitamin A	6%
Vitamin C 0 mg	0%
* The % Daily Value (DV) tells you how much a nutrient in a serving of food contributes to a daily diet. 2,000 calories a day is used for general nutrition advice.	

Ingredients: OVEN ROASTED TURKEY BREAST: Turkey Breast, Turkey Broth, Less Than 2% Salt, Vinegar, Food Starch, Natural Flavor. CHILI TOMATO FLOUR TORTILLA: Bleached Wheat Flour (Enriched With Niacin, Reduced Iron, Thiamine Mononitrate, Riboflavin, Folic Acid), Water, Vegetable Oil Shortening (Interesterified Soybean Oil, Hydrogenated Soybean Oil), Dextrose, Sugar, Tomato Powder, Onion Powder, Garlic Powder, Ground Paprika, Jalapeno Powder, Paprika Extractives, Natural Flavors, Spices, Citric Acid, Lime Juice Powder, Corn Syrup Solids, FD&C Red #40, FD&C Yellow #6, Salt, Sodium Bicarbonate, Mono- And Diglycerides, Corn Starch, Guar Gum, To Maintain Freshness (Fumaric Acid, Calcium Propionate, Potassium Sorbate), Enzymes, Sodium Metabisulfite, Silicon Dioxide. WHITE FLOUR TORTILLA: Bleached Wheat Flour (Enriched with Niacin, Reduced Iron, Thiamine Mononitrate, Riboflavin, Folic Acid), Water, Vegetable Oil Shortening (Interesterified Soybean Oil, Hydrogenated Soybean Oil), Salt, To Maintain Freshness (Fumaric Acid, Potassium Sorbate, Calcium Propionate), Sodium Bicarbonate, Mono- And Diglycerides, Corn Starch, Guar Gum, Sodium Metabisulfite, Enzymes. PASTEURIZED PROCESS MONTEREY JACK CHEESE WITH JALAPENO AND RED BELL PEPPERS: Milk, Cream, Water, Sodium Citrate, Salt, Cheese Culture, Jalapeno Peppers, Jalapeno Pepper Puree, Sorbic Acid (Preservative), Jalapeno Peppers*, Enzymes, Red Bell Peppers*, Citric Acid, Natural Flavor, Soy Lecithin. *Dried. CHIPOTLE MAYONNAISE: Soybean Oil, Vinegar, Water, Egg Yolk, High Fructose Corn Syrup, Chipotle Pepper, Salt, Contains Less Than 2% of Lime Juice, Onion Powder, Sugar, Mustard Bran, Garlic Powder, Mustard Flour, Garlic, Xanthan Gum, Maltodextrin, Spice, Chili Powder (Chili Pepper, Spice, Salt, Garlic), Natural Smoke Flavor, Jalapeno Pepper, Dried Red Bell Pepper, Garlic Juice Concentrate, Calcium Disodium EDTA (To Protect Flavor), Corn Starch, Canola Oil, Sesame Oil, Citric Acid, Natural Flavor (Including Celery).

Nutritionals and Ingredients (Consumer or Base GTIN: 00044500975864)

Representation of label(s). The actual nutritional label(s) on the package may vary slightly

Nutrition Facts (Unprepared)	
1 Servings Per Container	
Serving Size	246 g
Amount Per Serving	
Calories	640
	% Daily Value*
Saturated Fat 10 g	50%
Trans Fat 0.5 g	
Cholesterol 60 mg	20%
Sodium 1530 mg	64%
Total Carbohydrate 65 g	22%
Dietary Fiber 2 g	8%
Sugar 2 g	0%
Protein 31 g	0%
Calcium 300 mg	30%
Iron 5 mg	25%
Vitamin A	6%
Vitamin C 0 mg	0%
* The % Daily Value (DV) tells you how much a nutrient in a serving of food contributes to a daily diet. 2,000 calories a day is used for general nutrition advice.	

Ingredients: OVEN ROASTED TURKEY BREAST: Turkey Breast, Turkey Broth, Less Than 2% Salt, Vinegar, Food Starch, Natural Flavor. CHILI TOMATO FLOUR TORTILLA: Bleached Wheat Flour (Enriched With Niacin, Reduced Iron, Thiamine Mononitrate, Riboflavin, Folic Acid), Water, Vegetable Oil Shortening (Interesterified Soybean Oil, Hydrogenated Soybean Oil), Dextrose, Sugar, Tomato Powder, Onion Powder, Garlic Powder, Ground Paprika, Jalapeno Powder, Paprika Extractives, Natural Flavors, Spices, Citric Acid, Lime Juice Powder, Corn Syrup Solids, FD&C Red #40, FD&C Yellow #6, Salt, Sodium Bicarbonate, Mono- And Diglycerides, Corn Starch, Guar Gum, To Maintain Freshness (Fumaric Acid, Calcium Propionate, Potassium Sorbate), Enzymes, Sodium Metabisulfite, Silicon Dioxide. WHITE FLOUR TORTILLA: Bleached Wheat Flour (Enriched with Niacin, Reduced Iron, Thiamine Mononitrate, Riboflavin, Folic Acid), Water, Vegetable Oil Shortening (Interesterified Soybean Oil, Hydrogenated Soybean Oil), Salt, To Maintain Freshness (Fumaric Acid, Potassium Sorbate, Calcium Propionate), Sodium Bicarbonate, Mono- And Diglycerides, Corn Starch, Guar Gum, Sodium Metabisulfite, Enzymes. PASTEURIZED PROCESS MONTEREY JACK CHEESE WITH JALAPENO AND RED BELL PEPPERS: Milk, Cream, Water, Sodium Citrate, Salt, Cheese Culture, Jalapeno Peppers, Jalapeno



GTIN CODE: 00071421094718
LEGACY PRODUCT CODE: 9471
PRODUCT CODE: 10000019471

The Pub® Angus Chopped Beef Steak, Fully Cooked, 3 oz, 10.5 Lbs

Ingredients

Beef, encapsulated salt, sodium phosphates, salt, spice.

Packaging information

MASTER CASE
CUBE 0.6095

GROSS WEIGHT 11.7131 lbs

HEIGHT 5.3125

LENGTH 18.125

NET WEIGHT 10.5

WIDTH 10.9375

PALLET
HI 7

TI 9

Storage

SHELF LIFE: 455 Days

STORAGE TEMPERATURE - MAXIMUM: 0 °F

STORAGE TEMPERATURE - MINIMUM: 0 °F

STORAGE METHOD: Frozen

Preparation

BAKE:

Conventional Oven From a frozen state, bake on a pan in preheated conventional oven at 350 for 13-15 minutes.

CONVECTION:

Convection Oven From a frozen state, bake on a pan in preheated convection oven at 350 for 5-7 minutes.

Nutritional information

NUTRITION FACTS

56 Servings Per Container

Serving Size 84g

Amount Per Serving

Calories 220

Daily Value % *

Total Fat 16g 25%

Saturated Fat 7g 35%

Trans Fat 0.5g

Polyunsaturated Fat 0.5g

Monounsaturated Fat 7g

Cholesterol 70mg 23%

Sodium 350mg 15%

Total Carbohydrate 0g 0%

Dietary Fiber 0g 0%

Total Sugars 0g

Includes Added Sugars %

Protein 17g

Vitamin D %

Calcium 2%

Iron 10%

Potassium %

*The % Daily Value tells you how much a nutrient in a serving of food contributes to a daily diet. 2,000 calories a day is used for general nutrition advice.

To inquire if a signed copy of the product formulation statement or Child Nutrition statement is available for this item, please contact the Tyson Foodservice Customer Relations Team at 1-800-261-4754. Or email tysonfoodservice@casupport.com.

Need help?

Call us at 1-800-261-4754

© 2019 Tyson Foods, Inc. Trademarks and registered trademarks are owned by Tyson Foods, Inc. or its subsidiaries.

Select Customer

Q

Search By: Multiple Item Numbers (/Search/ByNumbers).



DOT 712493
MFG 10000097589
GTIN 10044500975892

CASE:

ADD TO

ADD TO FAVOI

SHARE VIA EM

PRINT (/MODA

DOWNLOAD (/




UOM	ORDER SIZE	THE PRICE	AVAILABILITY
CASE	5,000 #+	\$20.6300	Stocked
	10,000 #+	\$20.6300	
	20,000 #+	\$20.6300	
	40,000 #+	\$20.6300	

GTIN

Item Dimensions

Unit of Measure	CASE
Shipping Weight	4.7540 LB
Product Weight	3.8100 LB
Length	13.3120 IN
Width	9.4380 IN
Height	6.1250 IN
Cube	0.4450 CF
Units Per Layer	15.0000
Units Per Pallet	105.0000

Additional Information

Terms	0.00 % 10 DAYS NET 11
Buying Group	INDEPENDENT FOODSERVICE
Total Shelf Life	270 days
Temperature	FROZEN GOODS
Category Placement	Prepared Foods > Entrees
IFDA Item Category 	Entrees
IFDA Item Class 	Sandwiches, Frozen
Global Product Category	Sandwiches/Filled Rolls/Wraps (Frozen)
Country of Origin	UNITED STATES
Corporate Supplier	TYSON
Hazardous Materials	No

Additional Descriptions

Dot Abbreviated Description	SRF TYB & NCHE WDG 6.1Z 10-.381 LB
Dot Expanded Description	TURKEY BREAST & NATURAL CHEDDAR WEDGE 6.1Z 10-.381 POUND
Supplier Short Description	HF TKY BST & CDR WDG
Supplier Long Description	Turkey Breast and Cheddar Wedge
Supplier Product Description	Turkey Breast and Cheddar Wedge

